

B10 5.0W LED FILAMENT

SPECIFICATIONS & TECHNICAL DATA

The 120V EmeryAllen B10 retrofit lamp is an energy efficient alternative to incandescent E12 base lamps. It offers similar light output to a 120V, 60W incandescent (500lm) and is suitable for use in most 120V E12 fixtures.

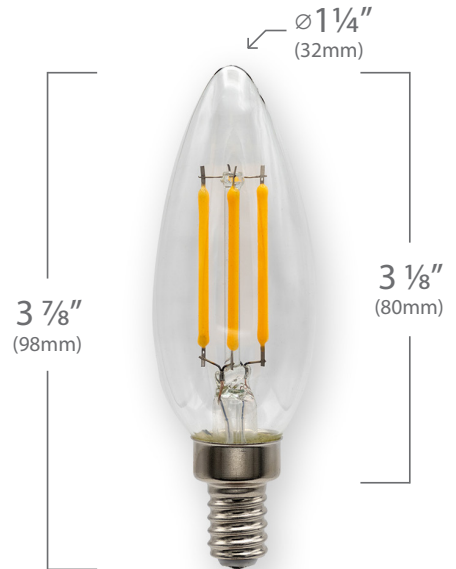
Base Type	E12
Material	Glass + Aluminum
Input Voltage	100-130V AC
Wattage	4.69
Volt-Amperes (VA)	5.96
CRI	93
Brightness	545 lumens
Lumens/Watt	116
Color Temperature	2700K & 3000K
R9	55
Halogen Equivalent	60W
Beam Angle	360 degrees
Life	15,000 hours
Warranty	Limited Lifetime*

Available Models:

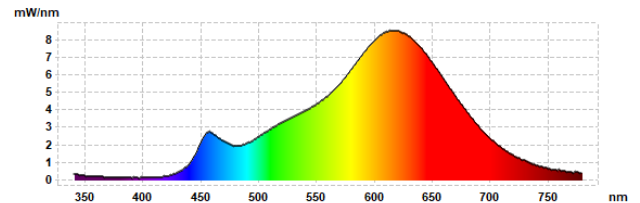
- EA-B10-5.0W-E12-2790-D (2700K)
- EA-B10-5.0W-E12-3090-D (3000K)

Dimming:

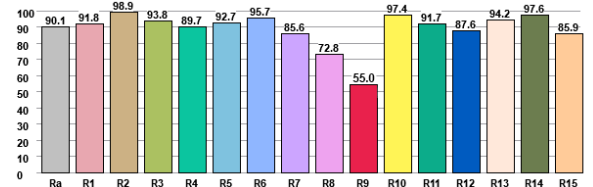
Dimmable with most incandescent and LED dimmers.



SPECTRAL DISTRIBUTION



CRI VALUES R1-R15



TM30 VECTOR

